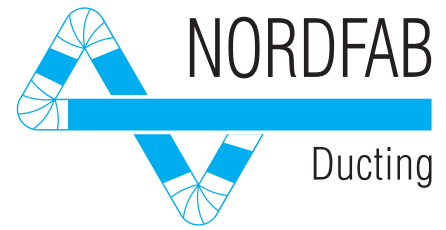


# FB



## Duct System Product Catalogue

FB 17:1 English

*The world's fastest ducting™*

## Sizing Nordfab® Ducting Systems

Nordfab offers assistance to customers who have never designed a ducting system. We can assist you with determining the correct duct size and

configuration for optimal air flow. Please call your local representative for assistance.

### Range of duct air flow volumes m<sup>3</sup>/h

Ø mm	10 m/s	12 m/s	15 m/s	18 m/s	20 m/s	22 m/s	25 m/s	27 m/s	29 m/s	31 m/s
80	181	217	271	326	362	398	452	489	525	561
100	283	339	424	509	566	622	707	763	820	877
125	442	530	663	795	884	972	1105	1193	1281	1370
140	554	665	831	998	1108	1219	1385	1496	1607	1718
150	636	763	954	1145	1272	1400	1590	1718	1845	1972
160	724	869	1086	1303	1448	1592	1810	1954	2099	2244
180	916	1099	1374	1649	1832	2015	2290	2473	2657	2840
200	1131	1357	1697	2036	2262	2488	2827	3054	3280	3506
224	1419	1702	2128	2554	2837	3121	3547	3831	4114	4398
250	1767	2121	2651	3181	3534	3888	4418	4771	5125	5478
300	2545	3054	3817	4580	5089	5598	6362	6871	7380	7889
315	2806	3367	4208	5050	5611	6172	7014	7575	8136	8697
350	3464	4156	5195	6235	6927	7620	8659	9352	10045	10737
400	4524	5429	6786	8143	9048	9953	11310	12215	13119	14024
450	5726	5871	8588	10306	11451	12569	14314	15459	16604	17749
500	7069	8482	10603	12724	14137	15551	17672	19085	20499	21913
560	8867	10640	13300	15960	17734	19507	22167	23940	25714	27487
630	11222	13466	16833	20200	22444	24689	28055	30300	32544	34788
710	14253	17104	21380	25656	28506	31357	35633	38483	41334	44185

## Using the Air Volume Chart

This chart allows you to choose the correct duct size for the air volume that is required. Different materials need to be conveyed at different velocities to prevent the material from falling out of the air stream. For example, wood chips and saw dust flow well between 18 and 22 m/s. Referring to the chart, a 100 mm duct will convey

622 m<sup>3</sup>/h at 22 m/s. This indicates that a 100 mm pickup on a machine will use 622 m<sup>3</sup>/h from the filtering system. Or working in reverse, if you know that a machine will require approximately 650 m<sup>3</sup>/h to remove the waste, then you should design a 100 mm duct for the application.



**RSVV**

Laser welded duct  
FB, 6 mm edge  
Ø 080-350 0,7 mm  
Ø 400 0,9 mm  
galvanised

ORDER EXAMPLE: RSVV 20005

Ø 1,5 m	0,5 m	1 m	1,5 m
080	x	x	
100	x	x	x
120	x	x	x
125	x	x	x
140	x	x	x
150	x	x	x
160	x	x	x
180	x	x	x
200	x	x	x
225	x	x	x
250	x	x	x
275	x	x	x
300	x	x	x
315	x	x	x
350	x	x	x
400	x	x	x



**RSFV**

Laser welded duct  
MFL, incl. 2 loose flanges.  
Ø 080-350 0,7 mm  
Ø 400 0,9 mm  
galvanised

ORDER EXAMPLE: RSFV 20005

Ø mm	0,5 m	1 m	1,5 m
080	x	x	
100	x	x	x
120	x	x	x
125	x	x	x
140	x	x	x
150	x	x	x
160	x	x	x
180	x	x	x
200	x	x	x
225	x	x	x
250	x	x	x
275	x	x	x
300	x	x	x
315	x	x	x
350	x	x	x
400	x	x	x



**RSAA**

Folded seam duct  
FB, 6 mm edge  
0,9 mm galvanised

ORDER EXAMPLE: RSAA 45020

Ø mm	0,5 m	1 m	1,5 m	2 m
450	x	x	x	x
500	x	x	x	x
550	x	x	x	x
600	x	x	x	x
630	x	x	x	x
650	x	x	x	x
700	x	x	x	x
750	x	x	x	x
800	x	x	x	x
900	x	x	x	x
1000	x	x	x	x

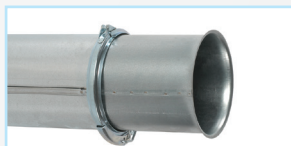


**RSFA**

Folded seam duct  
MFL, incl. 2 loose flanges.  
0,9 mm galvanised

ORDER EXAMPLE: RSFA 45020

Ø mm	0,5 m	1 m	1,5 m	2 m
450	x	x	x	x
500	x	x	x	x
550	x	x	x	x
600	x	x	x	x
630	x	x	x	x
650	x	x	x	x
700	x	x	x	x
750	x	x	x	x
800	x	x	x	x
900	x	x	x	x
1000	x	x	x	x

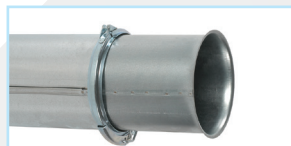


**RSTA**

**Laser welded duct**  
Telescopic Duct  
including quicklock  
FB, 6 mm edge  
Ø 080-350 0,7 mm  
Ø 400 0,9 mm  
galvanised

ORDER EXAMPLE: RSTA 200

Ø mm		Ø mm	
080	x	225	x
100	x	250	x
120	x	300	x
125	x	315	x
140	x	350	x
150	x	400	x
160	x		
180	x		
200	x		



**RSTA**

**Folded seam duct**  
Telescopic Duct  
including quicklock  
FB, 6 mm edge  
0,9 mm galvanised

ORDER EXAMPLE: RSTA 450

Ø mm	
450	x
500	x
550	x

**FSAE**

ORDER EXAMPLE:  
FSAE200



Ø mm	Ø mm
080	275
100	300
120	315
125	350
140	400
150	450
160	500
180	550
200	600
225	
250	

Quick release Clip with PVC lining  
Ø 80400 mm hinged type  
Ø 450800 bolted type

**FSAB**

ORDER EXAMPLE:  
FSAB100



Ø mm	Ø mm
080	225
100	250
120	275
125	300
140	315
150	350
160	400
180	450
200	500

Bolted Clip

**FSAD**

ORDER EXAMPLE:  
FSAD160

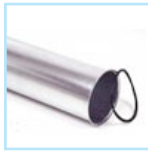


Ø mm	Ø mm
160	450
180	500
200	550
225	600
250	630
300	650
315	700
350	750
400	800

Wide clip (Offers more stability)

**RSRS**

ORDER EXAMPLE:  
RSRS100

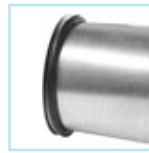


Ø mm	Ø mm
080	180
100	200
120	225
125	250
140	275
150	300
160	

Rubber gasket  
EPDM rubber  
To be used in conjunction with FSAB Clips

**RSRR**

ORDER EXAMPLE:  
RSRR100



Ø mm	Ø mm
080	180
100	200
120	225
125	250
140	275
150	300
160	

Rubber ring  
EPDM rubber  
To adapt FB to QF duct

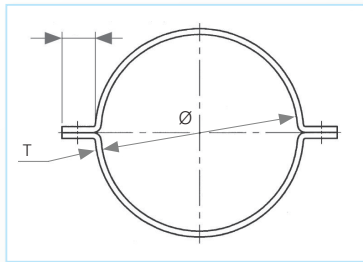
**KVDA Split Strap**

ORDER EXAMPLE:  
KVDA200



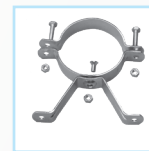
Galvanised 25 x 2.0 mm. Incl. bolt and nut.

Ø	Ø
080	300
100	315
120	350
125	400
140	450
150	500
160	550
180	600
200	650
225	710
250	



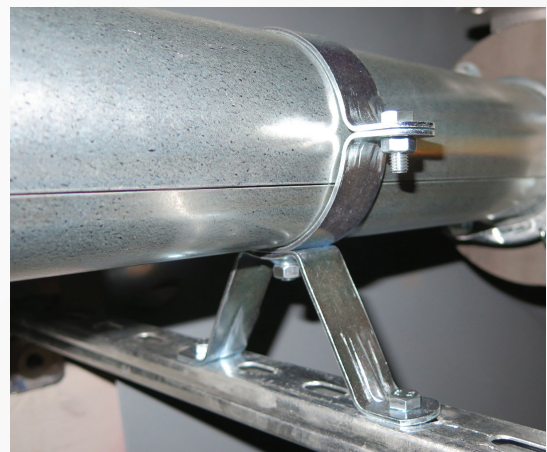
**KVDD Legs for Split Strap**

ORDER EXAMPLE:  
KVDD200



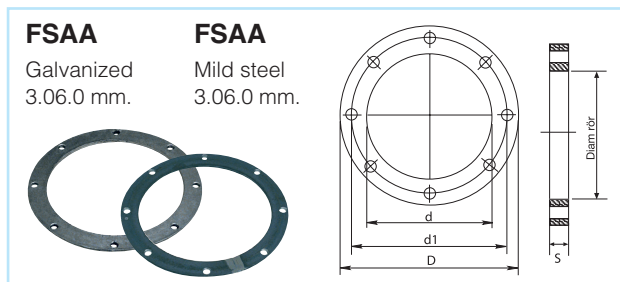
Ø
80 160
180 315
350
400

Galvanised 25 x 2.0 mm. Incl. bolt and nut.



Straight Duct mounted with Split Strap and Legs for Split Strap.

# Flanges



**FSAA**

Galvanized  
3.06.0 mm.

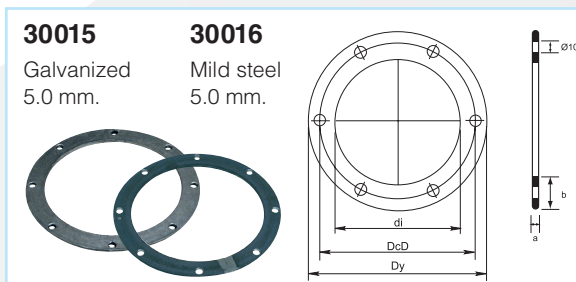
**FSAA**

Mild steel  
3.06.0 mm.

ORDER EXAMPLE: FSAA100

Flange FSAA/FSSA/FSSS Dimensions in mm

Ø	d	D flange	d1 flange	S	Thick-ness	Hole Ø	No. of holes	Weight kg
080	83	133	115	3	25	9	8	0,26
100	103	153	135	3	25	9	8	0,31
120	123	173	155	3	25	9	8	0,36
125	128	178	160	3	25	9	8	0,38
140	143	193	175	3	25	9	8	0,41
150	153	203	185	5	25	9	8	0,54
160	163	213	195	5	25	9	8	0,58
180	183	233	215	5	25	9	8	0,64
200	203	253	235	5	25	9	12	0,70
225	228	278	260	5	25	9	12	0,75
250	253	303	285	5	25	9	12	0,86
300	304	354	336	5	25	9	12	1,00
315	319	369	351	5	25	9	12	1,26
350	354	414	389	6	30	11	12	1,84
400	404	464	439	6	30	11	16	2,10
450	454	515	489	6	30	11	16	2,32
500	505	565	540	6	30	11	16	2,56
550	555	615	590	6	30	11	16	2,81
600	605	665	640	6	30	11	16	3,04
630	635	695	670	6	30	11	24	3,19
650	655	715	690	6	30	11	24	3,28
700	705	765	740	6	40	11	24	3,53
750	755	835	800	6	40	11	24	5,09
800	805	885	850	6	40	11	24	5,41
850	855	935	900	6	40	11	24	5,73
900	905	985	950	6	40	11	24	6,05
950	955	1035	1000	6	40	11	24	6,37
1000	1005	1085	1050	6	40	11	24	6,69
1250	1255	1335	1300	6	40	11	28	6,85



**30015**

Galvanized  
5.0 mm.

**30016**

Mild steel  
5.0 mm.

Flange 30015/30016 Dimensions in mm

Ø	di	DcD	Dy	No. Ø10	a x b	Weight kg
100	101	127	143	4	5 x 20	0,30
125	126	157	178	4	5 x 25	0,45
140	141	172	193	6	5 x 25	0,50
160	161	192	213	6	5 x 25	0,55
180	181	212	233	6	5 x 25	0,65
200	203	232	253	6	5 x 25	0,70
250	253	289	313	6	5 x 30	1,05
315	317	349	377	8	5 x 30	1,25
350	353	387	413	8	5 x 30	1,40
400	404	438	464	12	5 x 30	1,55
450	454	488	514	12	5 x 30	1,75
500	504	538	564	12	5 x 30	1,95
560	565	600	625	12	5 x 30	2,15
630	635	670	695	16	5 x 30	2,40
710	715	750	775	16	5 x 30	2,70
800	804	848	884	16	5 x 40	4,10
900	904	948	984	16	5 x 40	4,60

**FSSS**

ORDER EXAMPLE:  
FSSS200

Ø	Ø
080	450
100	500
120	550
125	600
140	630
150	650
160	700
180	750
200	800
225	850
250	900
300	950
315	1000
350	1250
400	

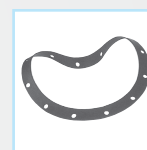


Flange  
Stainless steel  
3.06.0 mm.

**FSAZ**

ORDER EXAMPLE:  
FSAZ200

Ø	Ø
080	450
100	500
120	550
125	600
140	630
150	650
160	700
180	750
200	800
225	850
250	900
300	950
315	1000
350	1250
400	



Flange gasket  
3.0 mm, chloroprene.

Also available in other qualities.  
Compatible with FSAA, FSSA, FSSS.

# Bends



## BSFA

R = 1.5 x D  
MFL, incl. loose flanges.  
Pressed bend. 1.0 mm galvanised

ORDER EXAMPLE: BSFA08015

Ø mm	90°	60°	45°	30°	15°
080	x	x	x	x	x
100	x	x	x	x	x
120	x	x	x	x	x
125	x	x	x	x	x
140	x	x	x	x	x
150	x	x	x	x	x
160	x	x	x	x	x
180	x	x	x	x	x
200	x	x	x	x	x
225	x	x	x	x	x
250	x	x	x	x	x
275	x	x	x	x	x
300	x	x	x	x	x
315	x	x	x	x	x



## BSAA

R = 1.5 x D  
FB, with 6 mm edge  
Pressed bend. 1.0 mm galvanised

ORDER EXAMPLE: BSAA12030

Ø mm	90°	60°	45°	30°	15°
080	x	x	x	x	x
100	x	x	x	x	x
120	x	x	x	x	x
125	x	x	x	x	x
140	x	x	x	x	x
150	x	x	x	x	x
160	x	x	x	x	x
180	x	x	x	x	x
200	x	x	x	x	x
225	x	x	x	x	x
250	x	x	x	x	x
275	x	x	x	x	x
300	x	x	x	x	x
315	x	x	x	x	x



## BSFA

R = 1.5 x D  
MFL, incl. 2 loose flanges.  
Segmented bend  
1.0 mm galvanised

ORDER EXAMPLE: BSFA35090

Ø mm	90°	60°	45°	30°	15°
350	x	x	x	x	x
400	x	x	x	x	x
450	x	x	x	x	x
500	x	x	x	x	x
550	x	x	x	x	x
600	x	x	x	x	x
630	x	x	x	x	x
650	x	x	x	x	x
700	x	x	x	x	x
750	x	x	x	x	x
800	x	x	x	x	x
900	x	x	x	x	x
1000	x	x	x	x	x



## BSAA

R = 1.5 x D  
FB, with 6 mm edge  
Segmented bend  
1.0 mm galvanised

ORDER EXAMPLE: BSAA35090

Ø mm	90°	60°	45°	30°	15°
350	x	x	x	x	x
400	x	x	x	x	x
450	x	x	x	x	x
500	x	x	x	x	x
550	x	x	x	x	x
600	x	x	x	x	x
630	x	x	x	x	x
650	x	x	x	x	x
700	x	x	x	x	x
750	x	x	x	x	x
800	x	x	x	x	x
900	x	x	x	x	x
1000	x	x	x	x	x

Ø mm	R=1xD	R=2xD	R=3xD	R=4xD	R=5xD
125 200	2.5 x price	3.0 x price	3.5 x price	4.0 x price	4.5 x price
225 315	2.0 x price	2.2 x price	2.5 x price	3.0 x price	4.0 x price
350 1000	1.0 x price	1.5 x price	2.0 x price	2.5 x price	3.0 x price



## BSAA

Segmented bend with nonstandard radius  
FB

custom example  
BSAA 40090 R = 3xD

# Branches



**GSAA**  
Branch  
30° 45° 90°  
FB  
MFL also available

ORDER EXAMPLE:  
GSAA-080808  
(Ø1=80, Ø2=80, Ø3=80)

Ø1 mm	
080	x
100	x
120	x
125	x
140	x
150	x
160	x
180	x
200	x
225	x
250	x
275	x
300	x
315	x
350	x
400	x
450	x
500	x
550	x
600	x
630	x
650	x
700	x
750	x
800	x
900	x
1000	x

When ordering please specify Ø1, Ø2, Ø3 dimensions.



**GDA**  
Double Branch  
30° 45°  
FB  
MFL also available

ORDER EXAMPLE:  
GDA-13081008  
(Ø1=125, Ø2=80, Ø3=100, Ø4=80)

Ø1 mm	
080	x
100	x
120	x
125	x
140	x
150	x
160	x
180	x
200	x
225	x
250	x
275	x
300	x
315	x
350	x
400	x
450	x
500	x
550	x
600	x
630	x
650	x
700	x
750	x
800	x
900	x
1000	x

When ordering please specify Ø1, Ø2, Ø3, and Ø4 dimensions.



**GSAP**  
Cut-in Branch  
30° 45°  
FB  
MFL also available

ORDER EXAMPLE:  
GSAP-1310  
(Ø1=125, Ø2=100)

Ø1 mm	
080	x
100	x
120	x
125	x
140	x
150	x
160	x
180	x
200	x
225	x
250	x
275	x
300	x
315	x
350	x
400	x
450	x
500	x
550	x
600	x
630	x
650	x
700	x
750	x
800	x
900	x
1000	x

When ordering please specify Ø1, Ø2 dimensions.



**GSAR**  
TBranch  
30° 40° 90°  
FB  
MFL also available

ORDER EXAMPLE:  
GSAR-1413  
(Ø1=140, Ø2=125)

Ø1 mm	
080	x
100	x
120	x
125	x
140	x
150	x
160	x
180	x
200	x
225	x
250	x
275	x
300	x
315	x
350	x
400	x
450	x
500	x
550	x
600	x
630	x
650	x
700	x
750	x
800	x
900	x
1000	x

When ordering please specify Ø1, Ø2, Ø3 dimensions.



**HSAA**  
Breeches piece  
90°  
FB  
MFL also available

ORDER EXAMPLE:  
HSAA-201616  
(Ø1=200, Ø2=160, Ø3=160)

Ø1 mm	
080	x
100	x
120	x
125	x
140	x
150	x
160	x
180	x
200	x
225	x
250	x
275	x
300	x
315	x
350	x
400	x
450	x
500	x
550	x
600	x
630	x
650	x
700	x
750	x
800	x
900	x
1000	x

When ordering please specify Ø1, Ø2 dimensions.

# Adapters



ORDER EXAMPLE:  
RRGS-0808  
(Ø1=80, Ø2=80)

Ø1 mm	
080	x
100	x
120	x
125	x
140	x
150	x
160	x
180	x
200	x
225	x
250	x
275	x
300	x
315	x
350	x
400	x
450	x
500	x
550	x
600	x
630	x
650	x
700	x
750	x
800	x
900	x
1000	x

When ordering please specify  
Ø1, Ø2 dimensions.



ORDER EXAMPLE:  
RRGL-080-050

Ø1 mm	
080	x
100	x
125	x
140	x
150	x
160	x
180	x
200	x
225	x
250	x
300	x
315	x
350	x
400	x
450	x
500	x

When ordering please specify  
Ø1, Ø2 dimensions.



ORDER EXAMPLE:  
RBAA-0808

Ø mm	
080	x
100	x
120	x
125	x
140	x
150	x
160	x
180	x
200	x
225	x
250	x
275	x
300	x
315	x
350	x
400	x
450	x
500	x



ORDER EXAMPLE:  
RBFA-08

Ø mm	
080	x
100	x
120	x
125	x
140	x
150	x
160	x
180	x
200	x
225	x
250	x
275	x
300	x
315	x
350	x
400	x



ORDER EXAMPLE:  
RMSA-120

Ø mm	
080	x
100	x
120	x
125	x
140	x
150	x
160	x
180	x
200	x
225	x
250	x
275	x
300	x
315	x
350	x
400	x



ORDER EXAMPLE:  
RMBA-160

Ø mm	
080	x
100	x
120	x
125	x
140	x
150	x
160	x
180	x
200	x
225	x
250	x
275	x
300	x
315	x
350	x
400	x



ORDER EXAMPLE:  
RMAA-080

Ø mm	
080	x
100	x
120	x
125	x
140	x
150	x
160	x
180	x
200	x
225	x
250	x
275	x
300	x
315	x
350	x
400	x





**RLLC**

Duct with inspection Panel  
FB  
MFL also available

ORDER EXAMPLE:  
RLLC-550

Ø1 mm	0.5m
080	x
100	x
120	x
125	x
140	x
150	x
160	x
180	x
200	x
225	x
250	x
275	x
300	x
315	x
350	x
400	x
450	x
500	x
550	x
600	x
630	x
650	x
700	x
750	x
800	x
900	x
1000	x

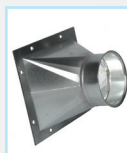


**RLLD**

Inspection Panel

ORDER EXAMPLE:  
RLLD-125

Ø mm	
100	x
120	x
125	x
150	x
160	x
180	x
200	x
250	x
300	x
315	x



**ROGS**

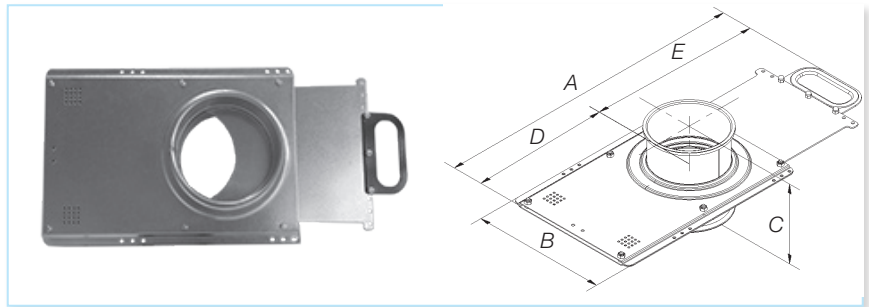
Transition  
FB  
MFL also available  
Please specify  $\phi$ , A x B and desired length

ORDER EXAMPLE:  
ROGS-400

Ø1 mm	0.5m
080	x
100	x
120	x
125	x
140	x
150	x
160	x
180	x
200	x
225	x
250	x
275	x
300	x
315	x
350	x
400	x
450	x
500	x
550	x
600	x
630	x
650	x
700	x
750	x
800	x
900	x
1000	x

## SBMS Manual Damper

The SBMS type energy saving damper is a manually operated blast gate or sliding damper.



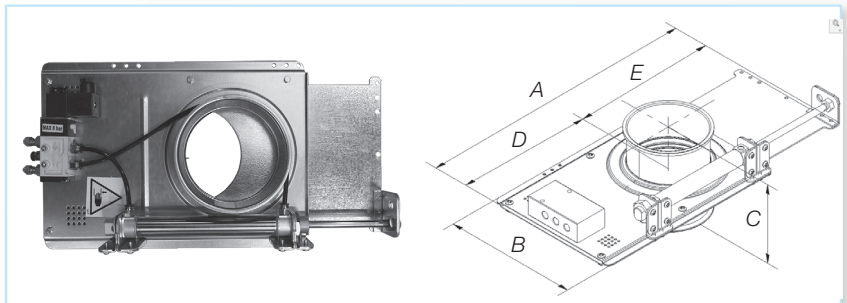
ORDER EXAMPLE: 280000200

Ø mm	Item no.	A mm	B mm	C mm	D mm	E mm	Weight kg
80	280000080	397	197	133	185	254	3,0
100	280000100	509	217	133	220	289	3,0
125	280000125	564	242	133	248	316	3,5
140	280000140	619	257	133	275	344	4,0
150	280000150	629	267	133	280	349	4,0
160	280000160	679	227	133	305	374	4,5
180	280000180	739	297	133	335	404	5,0
200	280000200	799	317	133	365	434	6,0
224	280000224	883	341	133	407	476	6,5
250	280000250	949	367	133	440	509	7,5
300	280000300	1099	417	133	515	584	9,5
315	280000315	1144	432	133	538	606	10,0
350	280000350	1279	467	133	605	674	11,5
400	280000400	1429	517	133	680	749	14,0

## SBAS Automatic Damper

The SBAS energy saving damper is an automatic blast gate driven by double acting compressed air cylinders.

- The damper should be connected to clean and dry compressed air
- Working pressure 68 bar
- Maximum temperature 75° C
- Voltage: 230V AC (Coils for 2448110 V AC & DC optional)

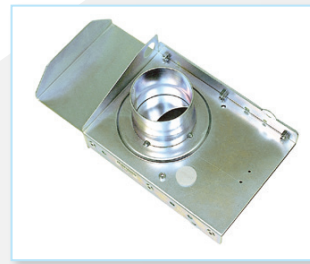


ORDER EXAMPLE: 290100250

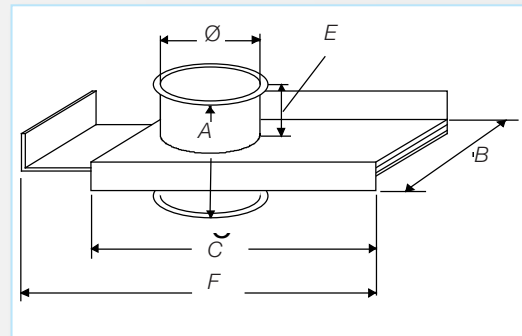
Ø mm	Item no.	A mm	B mm	C mm	D mm	E mm	Weight kg	No. of Cylinders
80	290100080	397	197	133	185	212	4,0	1
100	290100100	467	217	133	220	247	4,0	1
125	290100125	522	242	133	248	251	4,5	1
140	290100140	577	257	133	275	274	5,5	1
150	290100150	587	267	133	280	307	6,0	1
160	290100160	637	227	133	305	332	6,0	1
180	290100180	697	297	133	335	362	7,0	1
200	290100200	757	317	133	365	392	7,0	1
224	290100224	841	341	133	407	434	7,5	1
250	290100250	907	367	133	440	467	8,0	2
300	290100300	1057	417	133	515	542	12,0	2
315	290100315	1102	432	133	538	564	12,5	2
350	290100350	1237	467	133	605	632	14,0	2
400	290100400	1387	517	133	680	707	16,5	2

## SBBA Manual Damper

The SBBA is a circular slide damper for tight closure. In the closed position, the damper is airtight and silent. Since there is no damper blade in the air stream in the open position, the damper is suitable for use in systems for dustladen air. The damper is used for closing extraction points on machinery and in workplaces not currently in use.

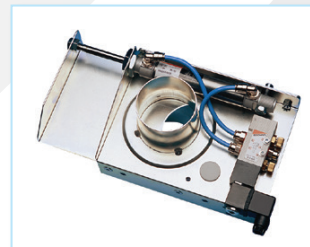


ORDER EXAMPLE: SBBAFB080							
Ø mm	Item no.	A mm	B mm	C mm	E mm	F mm	Weight kg
80	SBBAFB080	125	160	295	60	345	2,7
100	SBBAFB100	125	180	285	60	405	3,0
125	SBBAFB125	125	205	345	60	480	3,6
140	SBBAFB140	125	230	395	60	555	4,5
150	SBBAFB150	125	230	395	60	555	4,5
160	SBBAFB160	125	240	415	60	585	4,7
180	SBBAFB180	125	280	495	60	705	5,6
200	SBBAFB200	125	280	495	60	705	5,6
225	SBBAFB225	165	345	595	77	855	10,2
250	SBBAFB250	165	370	595	77	855	12,2
300	SBBAFB300	165	420	725	77	1050	18,1
315	SBBAFB315	165	435	725	77	1050	19,0
350	SBBAFB350	165	470	795	77	1155	22,5
400	SBBAFB400	165	520	895	77	1305	26,1

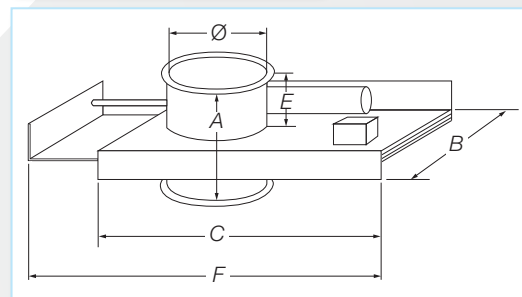


## SBBB Automatic Damper

The SBBB is a circular compressed air powered automatic slide damper for rapid and tight closure. Since the damper is opened and closed automatically, extraction is always focused on the connections, extraction points, or machines currently in operation. This maximizes extraction power, with lower energy consumption as a bonus.



ORDER EXAMPLE: SBBBFB230140 (230 V AC)							
Ø mm	Item no.	A mm	B mm	C mm	E mm	F mm	Weight kg
80	SBBBFB230080	125	160	225	55	250	3,0
100	SBBBFB230100	125	180	265	55	290	3,3
125	SBBBFB230125	125	205	315	55	340	4,0
140	SBBBFB230140	125	230	365	55	390	5,0
150	SBBBFB230150	125	230	365	55	390	5,0
160	SBBBFB230160	125	240	385	55	410	5,2
180	SBBBFB230180	125	280	465	55	490	6,2
200	SBBBFB230200	125	280	465	55	490	6,2
225	SBBBFB230225	165	345	565	77	585	11,3
250	SBBBFB230250	165	370	565	77	585	13,5
300	SBBBFB230300	165	420	695	77	730	20,1
315	SBBBFB230315	165	435	695	77	730	21,1
350	SBBBFB230350	165	470	765	77	800	25,0
400	SBBBFB230400	165	520	865	77	905	29,0



- The damper should be connected to clean and dry compressed air
- Working pressure 58 bar
- Maximum temperature 80° C
- Voltage: 230 V AC (Coils for 24110 V AC & DC optional, see website for item numbers)
- ATEX coil and solenoid optional

## Manual & Automatic Diverter Valves

Designed for quick changes between two streams and ideal for conveying dust particulate, our diverters meet EU's machinery directive (98/37/EC) and as standard are manufactured in 2.3 mm painted mild steel.

### Operation

- The damper should be connected to clean and dry compressed air
- Normal working pressure: 0.6 MPa (6 bar)
- Maximum pressure: 1.0 MPa (10 bar)
- Temp. range: 080° C (dry air 20° C)

### Finish

- RAL5010 blue



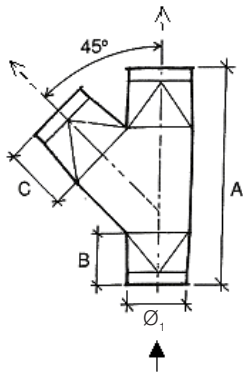
RGBM



RGSM

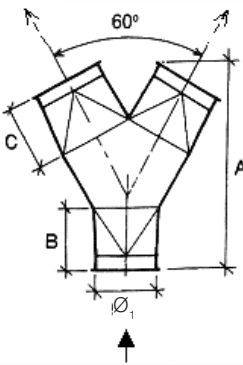


RGLS / RGBL



### RGSM Manual / RGBM Automatic

ORDER EXAMPLE: RGSM200 / RGBM400						
Ø <sub>1</sub> mm	A mm	B mm	C mm	Damper blade thickness	Weight RGSM	Weight RGBM
125	400	110	110	4	7.3	3.2
150	495	145	145	5	9.0	4.6
160	495	145	145	5	9.2	4.7
180	560	145	145	5	12.9	8.4
200	560	145	145	5	13.5	8.5
250	855	250	250	5	19.1	14.1
300	940	250	250	5	24.2	19.2
350	1000	250	250	6	28.9	23.9
400	1070	295	295	6	42.5	36.5
450	1125	295	295	6	46.7	40.8
500	1315	295	295	6	59.7	53.6
550	1490	345	345	6	74.6	66.5



### RGLS Manual / RGLB Automatic

ORDER EXAMPLE: RGLS200 / RGLB400						
Ø <sub>1</sub> mm	A mm	B mm	C mm	Damper blade thickness	Weight RGLB	Weight RGLS
125	330	110	110	4	7.2	3.2
150	455	145	145	5	9.0	4.6
160	455	145	145	5	9.1	4.7
180	525	145	145	5	12.9	8.4
200	525	145	145	5	13.4	8.5
250	820	250	250	5	19.1	14.1
300	900	250	250	5	24.2	19.1
350	880	250	250	6	28.9	23.9
400	930	295	295	6	42.5	36.4
450	965	295	295	6	46.8	40.8
500	1040	295	295	6	59.7	53.6
550	1170	345	345	6	66.6	74.5



**FLEX Hose**

Polyurethane hose with embedded steel helix. FLEX polyurethane hose t = either 0, 4 or 0,7 mm.

Available in 5 or 10 meter lengths

T=0,4 ORDER EXAMPLE: 40375974		
Inside Ø mm	Item no.	L m
051	40375956	5
051	40375957	10
063	40375958	5
063	40375959	10
076	40375960	5
076	40375961	10
082	40375962	5
082	40375963	10
102	40375964	5
102	40375965	10
127	40375966	5
127	40375967	10
152	40375968	5
152	40375969	10
165	40375970	5
165	40375971	10
182	40375972	5
182	40375973	10
203	40375974	5
203	40375975	10
229	40375976	5
229	40375977	10
254	40375978	5
254	40375979	10
305	40375980	5
305	40375981	10

T=0,7 ORDER EXAMPLE: 40376001		
Inside Ø mm	Item no.	L m
051	40375983	5
051	40375984	10
063	40375985	5
063	40375986	10
076	40375987	5
076	40375988	10
082	40375989	5
082	40375990	10
102	40375991	5
102	40375992	10
127	40375993	5
127	40375994	10
152	40375995	5
152	40375996	10
165	40375997	5
165	40375998	10
182	40375999	5
182	40376000	10
203	40376001	5
203	40376002	10
229	40376003	5
229	40376004	10
254	40376005	5
254	40376006	10
305	40376007	5
305	40376008	10



**Flexible hose clamp**



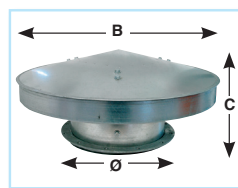
ORDER EXAMPLE: 30408-114	
Ø mm	Item no.
5065	30408-046
5875	30408-058
6885	30408-060
7795	30408-078
87112	30408-090
104138	30408-103
130165	30408-114
150180	30408-126
175205	30408-127
200231	30408-165
226256	30408-203
251282	30408-248
277307	30408-267

### Canopy / Rain Cap

Supplied in flanged design.

ORDER EXAMPLE: 23002150

Ø mm	Item no.	B mm	C mm	Thickness mm	Weight kg
125	23002125	250	150	0,90	1,50
140	23002140	350	190	0,90	1,90
150	23002150	350	190	0,90	1,95
160	23002160	350	190	0,90	2,10
180	23002180	400	220	0,90	2,50
200	23002200	400	220	0,90	2,55
225	23002225	500	240	0,90	2,60
250	23002250	500	240	0,90	3,00
300	23002300	650	340	0,90	5,20
315	23002315	650	340	0,90	5,30
350	23002350	650	340	0,90	5,90
400	23002400	750	371	0,90	8,10
480	23002450	750	370	0,90	8,20
500	23002500	950	440	0,90	9,90
550	23002550	950	440	0,90	10,50
600	23002600	1050	480	0,90	13,90
630	23002630	1050	480	0,90	14,00
650	23002650	1050	480	0,90	14,10
700	23002700	1200	570	0,90	21,40
750	23002750	1200	570	0,90	21,70
800	23002800	1400	610	1,25	25,60
850	23002850	1400	610	1,25	25,80
900	23002900	1550	680	1,25	29,50
950	23002950	1550	680	1,25	29,80
1000	230021000	1700	720	1,25	35,90



### Jet Cowl

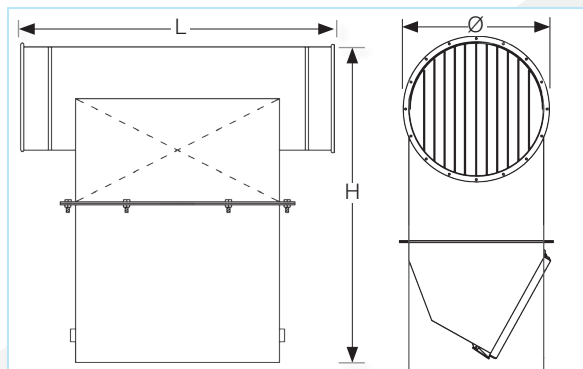
ORDER EXAMPLE: FB23000250

Ø mm	Item no.	A	L mm	Thickness mm	Weight kg
100	FB23000100	160	300	0,90	1,3
125	FB23000125	200	350	0,90	1,8
140	FB23000140	226	380	0,90	2,2
150	FB23000150	242	400	0,90	2,4
160	FB23000160	256	420	0,90	2,7
180	FB23000180	290	460	0,90	3,3
200	FB23000200	322	500	0,90	3,9
224	FB23000224	361	FB550	0,90	5,1
250	FB23000250	401	600	0,90	6,1
300	FB23000300	483	700	0,90	8,3
315	FB23000315	506	720	0,90	9,0
350	FB23000350	564	800	0,90	11,0
400	FB23000400	644	900	0,90	14,0
450	FB23000450	724	1000	0,90	17,4
500	FB23000500	804	1100	0,90	21,1
560	FB23000560	902	1220	0,90	26,0
630	FB23000630	1014	1360	0,90	40,0
710	FB23000710	1144	1520	0,90	49,0

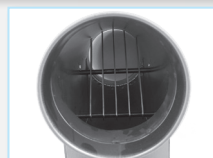
### Flanged design

ORDER EXAMPLE: FB23200250

Ø mm	Item no.
100	FB23200100
125	FB23200125
140	FB23200140
150	FB23200150
160	FB23200160
180	FB23200180
200	FB23200200
224	FB23200224
250	FB23200250
300	FB23200300
315	FB23200315
350	FB23200350
400	FB23200400
450	FB23200450
500	FB23200500
560	FB23200560
630	FB23200630
710	FB23200710
800	FB23200800
900	FB23200900
1000	FB232001000



The Dropout Box stops large wood chips in the airstream. Inside the duct, deflectors knock chips downward into the builtin hopper.



### QF Dropout Box

ORDER EXAMPLE: FB23050400			
Ø mm	Item no.	L	H
160	FB23050160	480	495
200	FB23050200	600	575
250	FB23050250	750	675
315	FB23050315	945	805
350	FB23050350	1050	875
400	FB23050400	1200	975
450	FB23050450	1350	1075
500	FB23050500	1500	1175
560	FB23050560	1500	1295
630	FB23050630	1500	1435
710	FB23050710	1500	1595

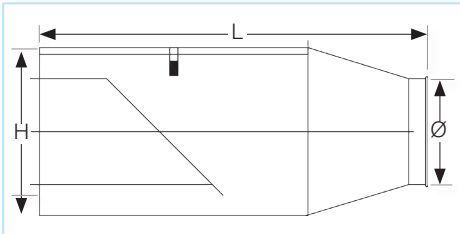
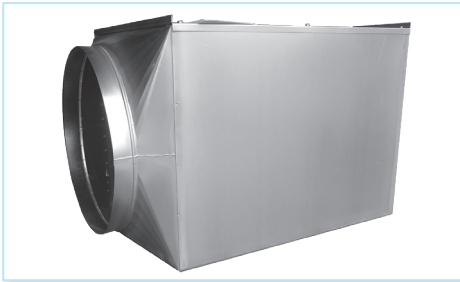
### Silencer

SILENCER ORDER EXAMPLE: RLDC20020			
Ø mm	Item no.	OD mm	L m
100	RLDC100XX	300	0.5 / 1 / 2
120	RLDC120XX	320	0.5 / 1 / 2
125	RLDC125XX	325	0.5 / 1 / 2
140	RLDC140XX	340	0.5 / 1 / 2
150	RLDC150XX	350	0.5 / 1 / 2
160	RLDC160XX	360	0.5 / 1 / 2
180	RLDC180XX	380	0.5 / 1 / 2
200	RLDC200XX	400	0.5 / 1 / 2
225	RLDC225XX	425	0.5 / 1 / 2
250	RLDC250XX	450	0.5 / 1 / 2
300	RLDC300XX	500	0.5 / 1 / 2
315	RLDC315XX	515	0.5 / 1 / 2
350	RLDC350XX	550	0.5 / 1 / 2
400	RLDC400XX	600	0.5 / 1 / 2
450	RLDC450XX	650	0.5 / 1 / 2
500	RLDC500XX	700	0.5 / 1 / 2
550	RLDC550XX	760	0.5 / 1 / 2
600	RLDC600XX	800	0.5 / 1 / 2
630	RLDC630XX	830	0.5 / 1 / 2
650	RLDC650XX	850	0.5 / 1 / 2
700	RLDC700XX	900	0.5 / 1 / 2



SILENCER WITH BAFFLE ORDER EXAMPLE: RLBC30005			
Ø mm	Item no.	OD mm	L m
300	RLBC300XX	500	0.5 / 1 / 2
315	RLBC315XX	515	0.5 / 1 / 2
350	RLBC350XX	550	0.5 / 1 / 2
400	RLBC400XX	600	0.5 / 1 / 2
450	RLBC450XX	650	0.5 / 1 / 2
500	RLBC500XX	700	0.5 / 1 / 2
550	RLBC550XX	750	0.5 / 1 / 2
600	RLBC600XX	800	0.5 / 1 / 2
630	RLBC630XX	830	0.5 / 1 / 2
650	RLBC650XX	850	0.5 / 1 / 2
700	RLBC650XX	900	0.5 / 1 / 2

### Inline Back Draft Damper



ORDER EXAMPLE: FB54000018  
QF Inline Back Draft Damper

Ø mm	Item no.	H mm	L mm	Weight kg
160	FB82100012	250	FB550	4,0
200	FB82100013	300	600	6,0
250	FB82100014	375	706	11,0
315	FB82100015	440	771	16,5
350	FB82100016	475	806	22,5
400	FB82100017	525	856	31,0
450	FB82100018	575	906	37,5
500	FB82100019	625	956	38,0
560	FB82100020	685	1116	44,5
630	FB82100021	755	1186	47
710	FB82100022	835	1266	57

ORDER EXAMPLE: FB54000018  
Inline Back Draft Damper with Flange

Ø mm	Item no.	H mm	L mm	Weight kg
160	FB82100023	250	FB550	5
200	FB82100024	300	600	7.5
250	FB82100025	375	706	11
315	FB82100026	440	771	16.5
350	FB82100027	475	806	22.5
400	FB82100028	525	856	31
450	FB82100029	575	906	37.5
500	FB82100030	625	956	38
560	FB82100031	685	1116	44.5
630	FB82100032	755	1186	47
710	FB82100033	835	1266	57

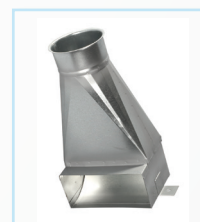


#### RHEB

Suction hood  
FB (MFL also available)  
Specify measurements B, C, D, etc.  
Indicate whether spigots are hose or duct connection.  
Also available in rectangular design.

ORDER EXAMPLE: RHEB-004  
(A=400, BCD=100)

Ø mm	24	59
080500	x	x



#### RGSA

Floor sweep  
FB

ORDER EXAMPLE: RGSA-080

Ø mm	24	59
080200	x	x



#### RHEA

Sputnik  
FB (MFL also available)  
Specify measurements B, C, D, etc.  
Indicate whether spigots are hose or duct connection.  
Also available in rectangular design.

ORDER EXAMPLE: RHEA-004  
(A=400, BCD=100)

Ø mm	24	59
080500	x	x



#### RGSS

Floor sweep with door and grill  
FB

ORDER EXAMPLE: RGSS-200

Ø mm	24	59
080200	x	x



## Inline Spark Trap

Complementary Fire Prevention for your Dust Collection System

### Simple, Economical Fire Protection

Installed in ducting as part of a dust collection system, the Nordfab Inline Spark Trap greatly reduces the possibility of fire in cyclones / collectors by decreasing the number of sparks which could reach the cyclone or collector through the ductwork.

The Spark Trap's effectiveness is based on a simple principle—disrupting the laminar airflow to cause sparks to cool and extinguish before they can enter a cyclone/ collector. There are no moving parts and no power is required for operation.

### Quick, Easy Installation and Cleanout

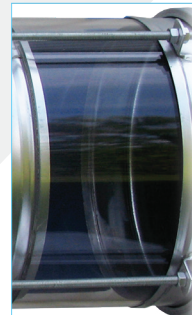
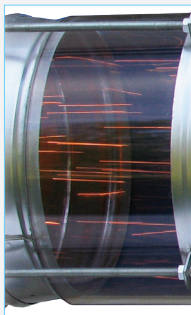
QuickFit clamptogether ducting eliminates rivets, screws, and welding, significantly reducing the time required to install or replace ducting. The Nordfab Inline Spark Trap can quickly and easily be mounted into QuickFit ducting systems, or other duct systems with use of a Nordfab adapter, and the trap can easily be removed for cleanout. Calibration or other assistance from a factory technician is not required.



↑ sparks visible in airstream entering trap (closeup below)

↑ airstream exiting trap (closeup below)

↑ Nordfab Inline Spark Trap (shown with viewing spoils on either side)

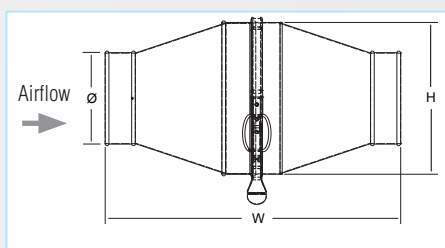


### Operation

- Must be mounted in a horizontal position.
- Duct distance recommended: At least ten diameters from cyclone / collector
- Velocity: 1500 5000 fpm (7.62m/sec 25.4m/sec).
- The Nordfab Inline Spark Trap is not a replacement for spark detection or explosion isolation systems. It is a complementary device only.

ORDER EXAMPLE: FB55010200 / FB55010100

Ø mm	Item no. Galvanised Steel / SS	Pressure loss in Pa at 15 m / s.	Height mm	Width mm	Weight kg
100	FB55010100 / FB55020100	212	180	466	2.8
125	FB55010125 / FB55020125	212	224	504	3.2
160	FB55010160 / FB55020160	224	280	546	3.7
200	FB55010200 / FB55020200	274	350	606	5.0
250	FB55010250 / FB55020250	299	400	606	5.9
315	FB55010315 / FB55020315	336	500	676	6.8
400	FB55010400 / FB55020400	361	630	766	7.3
450	FB55010450 / FB55020450	299	710	826	15
500	FB55010500 / FB55020500	311	810	926	21
560	FB55010560 / FB55020560	300	920	1026	26
630	FB55010630 / FB55020630	315	1020	1086	33
710	FB55010710 / FB55020710	320	1150	1186	39





## General Conditions of Sale

### Shipping and Packaging

An additional charge for shipping and packaging may be applied.

### Delivery Times

Order with parts available at stock and manufactured parts will be shipped in 1-2 days after order receipt.

### Upon Receipt of Delivery

Please check the number of packages and that all components are intact before signing the waybill.

If you are not completely satisfied with your order, please contact us.

Contact Mail Order:  
salesdk@nordfab.com

Contact Phone Order:  
+45 86 47 11 00

Contact Order fax:  
+45 99 68 09 01

Contact Internet:  
www.nordfab.eu

### Conditions for Returning goods

Please contact us before returning goods. Fax +45 99 680901, phone +45 86 47 11 00. When returning goods, please enclose a copy of the original invoice or delivery note. Returns without agreement and/or attached documents will not be credited.

Undamaged standard items should be returned in original packaging. 30% restocking charge apply.

Delivery charges for returned items are to be paid by the customer.

### Tracking Goods

Please use the waybill number on your current bill to track goods.

Goods can be tracked using:

*DHL Customer service*  
visit [www.dhl.com](http://www.dhl.com).

*Schenker*  
Phone terminal on each city or  
visit [www.schenker.com](http://www.schenker.com).

*Other companies*  
Phone terminal on each city.

### Price, reservation and technological changes

We reserve the right to change our prices at any time. To ensure you have the latest prices, please check our website [www.nordfab.eu](http://www.nordfab.eu).

### Product Documentation

For our product technical data sheets, please visit our website: [www.nordfab.eu](http://www.nordfab.eu).

### Hours of Operation

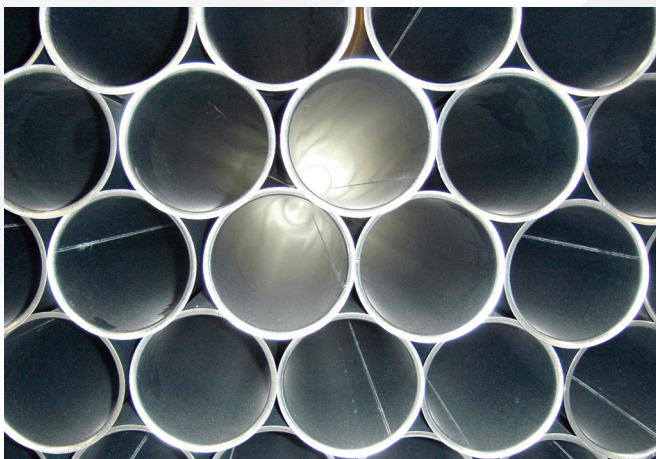
Weekdays 7:00 to 16:00.

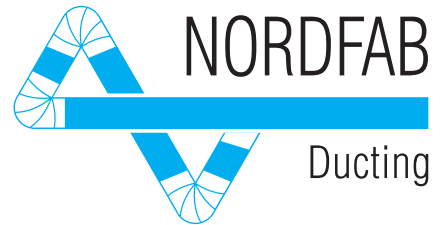
Ask about Nordfab's easy-to-use tools for designing and selling duct systems

- NordCAD™ for Layouts
- QTO™ for Quoting



Nordfab Europe sales and manufacturing facility in Assens Mariager, Denmark.





Contact:  
salesdk@nordfab.com  
Order by Phone: +45 86 47 11 00  
Order by Fax : +45 99 68 09 01

[www.nordfab.eu](http://www.nordfab.eu)



2018-02-07

*The world's fastest ducting™*